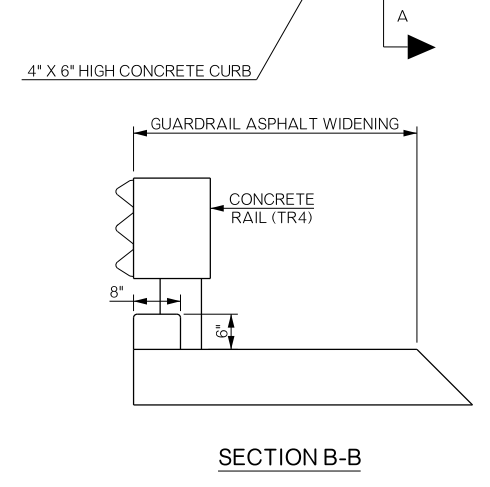
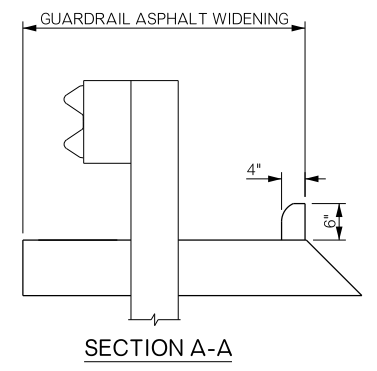
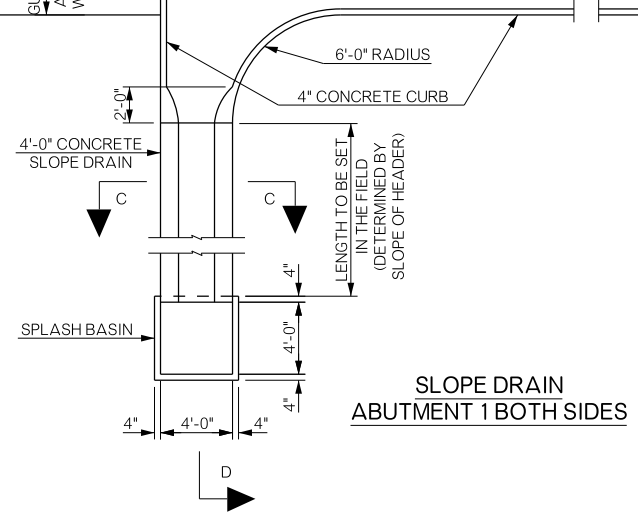
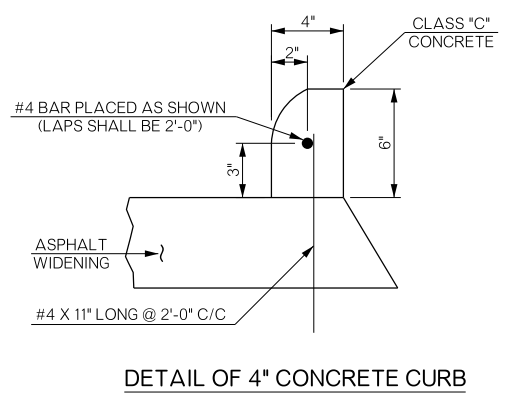
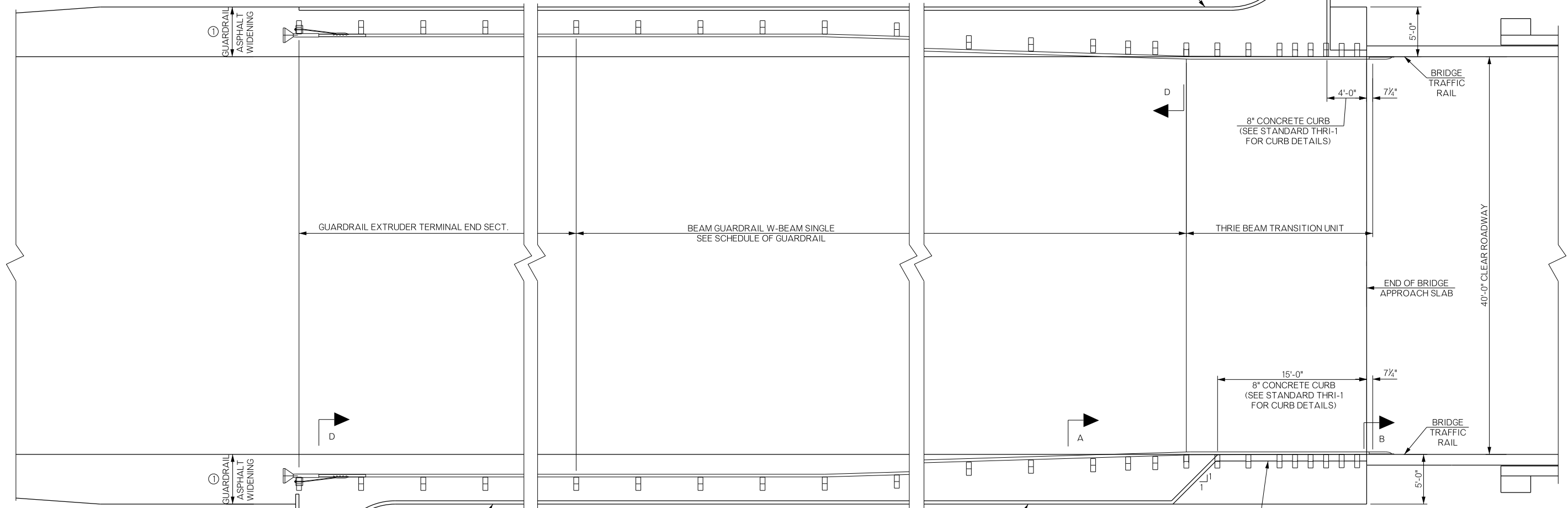
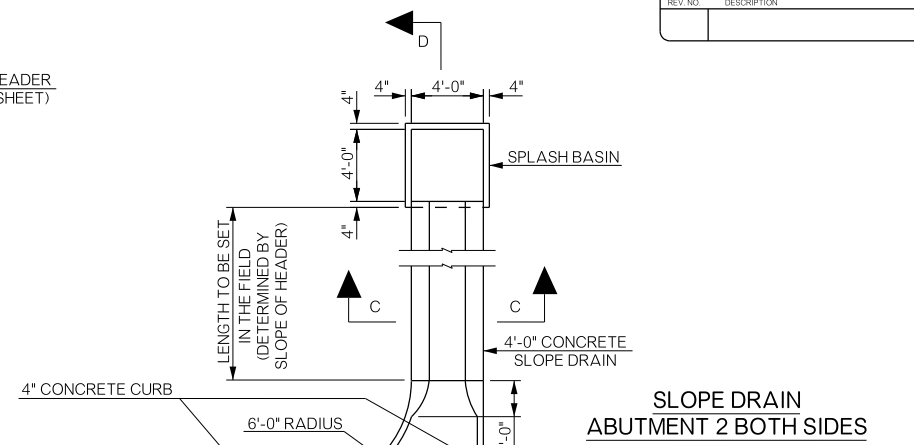
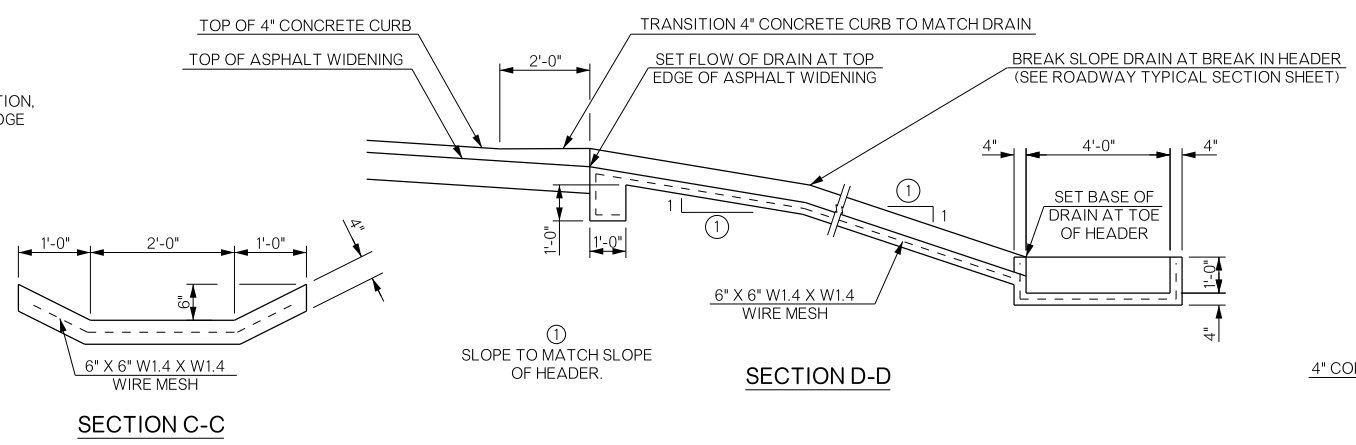


REVISIONS		
REV. NO.	DESCRIPTION	DATE

- NOTES:
- SLOPE DRAINS, SPLASH BASINS AND CONCRETE CURBS SHALL BE CONSTRUCTED USING CLASS 'C' CONCRETE. ALL COSTS TO CONSTRUCT SLOPE DRAINS, SPLASH BASINS AND CURBS INCLUDING THE COSTS OF CONCRETE, REINFORCING, WELDED WIRE FABRIC, EXCAVATION, BACKFILL, EQUIPMENT, MATERIAL, LABOR AND INCIDENTALS SHALL BE INCLUDED IN THE BRIDGE PAY ITEM FOR "CLASS 'C' CONCRETE".
 - APPROXIMATELY 25 CUBIC YARDS OF CLASS C CONCRETE IS REQUIRED TO CONSTRUCT THE CURBS, SLOPE DRAINS AND SPLASH BASINS.
 - SLOPE DRAIN LOCATION MAY BE ADJUSTED BY THE ENGINEER.



BRIDGE "B" U.S.-277 over SNAKE CREEK	COMANCHE COUNTY	Design	MLC	08/16
DETAILS OF DRAINS AT END OF BRIDGE (WITH GUARDRAIL)		Detail	VNT	08/16
		Check	DAH	04/17
STATE OF OKLAHOMA		DEPARTMENT OF TRANSPORTATION		Sheet No. B028
JOB/PIECE NO. 27968(04)		Engr: MOLLA-ESMAIL		